

SIGNAMAX[™]
CONNECTIVITY SYSTEMS



Category 5e+ Connectivity System

CAT
5e+
PERFORMANCE

The Signamax Category 5e+ Connectivity System provides superior permanent link and channel performance, by combining our Category 5e+ patch panels, work area products, patch cords and 110 cross-connect products. All Category 5e+ products are engineered to exceed TIA/EIA-568-B.2 component level specifications to insure support for the most demanding network applications. With usable bandwidth beyond 150 MHz, the Signamax Category 5e+ system combines exceptional value, performance and reliability for today's mission critical networks.

The Signamax Category 5e+ Connectivity System is third party tested using the worst case 4-conductor channel configuration to insure maximum performance. When installed by a Certified Signamax Installation/Design Partner you can chose to have your system covered by our 25-Year Connectivity/Cabling System Limited Warranty, which offers assurance that your system will your current and future network requirements.

Category 5e+ Cor

Category 5e+ Patch Panels

Signamax Category 5e+ patch panels have been engineered for high-performance, high-density and ease of installation. Panels are available in a variety of port sizes for both rack and wall mount application. Panels exceed both component and channel performance as specified in TIA/EIA-568-B.2.



Category 5e+ Patch Panels

PART NO.	DESCRIPTION
12458M-C5E	12-Port Category 5e+ Mini Panel w/89D Bracket, T568A/B
12458MD-C5E	12-Port Category 5e+ Patch Panel, T568A/B Wiring , 1.75" High
24458MD-C5E	24-Port Category 5e+ Patch Panel, T568A/B Wiring , 1.75" High
48458MD-C5E	48-Port Category 5e+ Patch Panel, T568A/B Wiring , 3.50" High
96458MD-C5E	96-Port Category 5e+ Patch Panel, T568A/B Wiring , 7.00" High
SMB-350	Panel Mount Cable Management Bar, 3.5" Deep

Category 5e+ Work Area Outlets

Offered in both a both a keystone type and a front-load, front-removable modular system, Signamax Category 5e Work Area products offer flexibility and ease of installation for any application. All connector modules and jacks exceed both component and channel performance standards as defined in TIA/EIA-568-B.2.

Category 5e+ Keystone Jacks

PART NO.	DESCRIPTION
KJ458-C5E	Category 5e+ Keystone Jack, T568A/B Wiring

Standard color is Light Ivory. For other colors add the following to P/N:
BK=Black BU=Blue GN=Green OR=Orange
RD=Red WH=White YE=Yellow

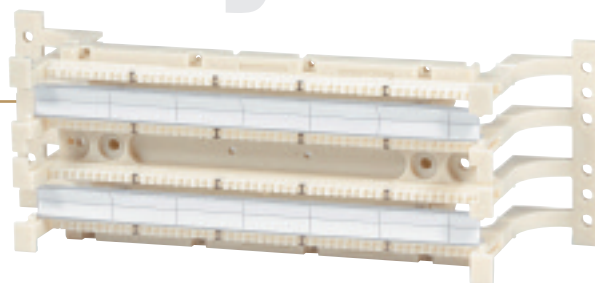
Category 5e+ Connector Modules

PART NO.	DESCRIPTION
SCM145-C5E	1-Port Category 5e+ Module, T568A/B Wiring
SCM245-C5E	2-Port Category 5e+ Module, T568A/B Wiring

Standard color is Light Ivory. For White add -WH to P/N.



Connectivity System



Category 5e+ Cross-Connect System

Signamax Category 5e+ 110 Cross-Connect system is designed for durability and ease of installation as well as performance.

When used as a transition point or as a primary part of your connectivity system, optimum channel performance is ensured. Patch Cords are available in 110/110 and 110/RJ-45 styles.

Category 5e+ 110 Wiring Block Kits

PART NO.	DESCRIPTION
WBK-50PRL4	50-Pair Kit w/Mounting Legs, (10) 4-Pair, (2) 5-Pair Connecting Clips & 1 Designation Label/Clear Holders
WBK-50PR4	50-Pair Kit w/o Mounting Legs, (10) 4-Pair, (2) 5-Pair Connecting Clips & 1 Designation Label/Clear Holders
WBK-100PRL4	100-Pair Kit w/Mounting Legs, (20) 4-Pair, (4) 5-Pair Connecting Clips & 2 Designation Labels/Clear Holders
WBK-100PR4	100-Pair Kit w/o Mounting Legs, (20) 4-Pair, (4) 5-Pair Connecting Clips & 2 Designation Labels/Clear Holders
WBK-300PRL4	300-Pair Kit w/Mounting Legs, (60) 4-Pair, (12) 5-Pair Connecting Clips & 3 Designation Labels/Clear Holders
WBK-300PR4	300-Pair Kit w/o Mounting Legs, (60) 4-Pair, (12) 5-Pair Connecting Clips & 3 Designation Labels/Clear Holders

Note: Wiring Blocks and Connecting Clips are also sold separately.

Category 5e+ Patch Cords

Signamax Category 5e+ Patch Cords provide an increased level of channel performance and are available in a variety of lengths and colors. Category 5e+ Patch Cords feature molded boots for improved reliability and performance. All cords are 100 transmission tested to component level specifications.

Category 5e+ Patch Cords with Snag-Proof Boots

PART NO.	DESCRIPTION
C5ES-114CC-LGFB	Category 5e+ Patch Cord w/Snag-Proof Boots

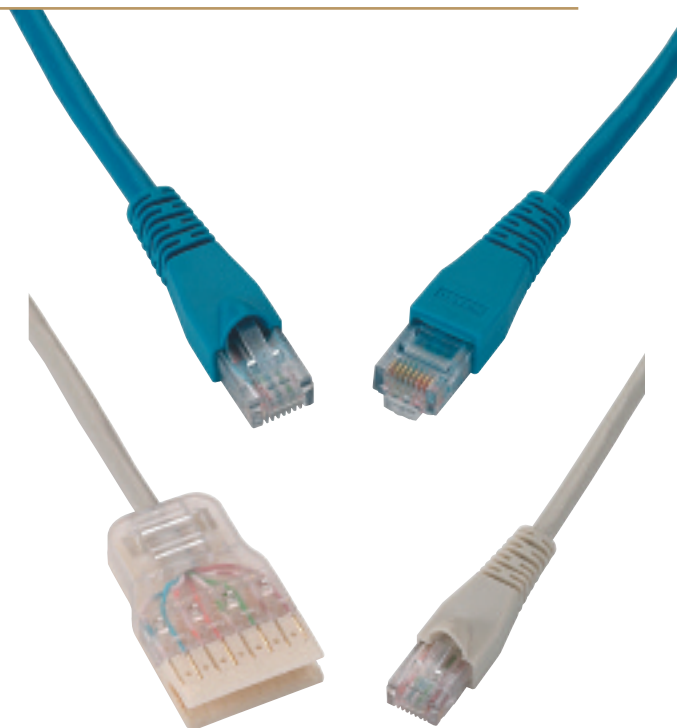
For cable color substitute CC for color in P/N;
BK=Black BU=Blue GY=Gray OR=Orange
WH=White YE=Yellow

Category 5e+ 110 Patch Cords

PART NO.	DESCRIPTION
Category 5e+ 110 Patch Cords	
C5E-4P-GY-LGB	Category 5e+ 4-Pair 110 Patch Cords
Category 5e+ RJ-45/110 Patch Cords	
C5E-4P-458B-GY-LGB	Category 5e+ RJ-45/4-Pair 110 Patch Cords

For cable length substitute LG for length in P/N.

3=3 Ft. 5=5 Ft. 7=7 Ft. 10=10 Ft. 14=14 Ft. 20=20 Ft. 25=25 Ft.



Category 5e+ Connectivity/Cabling System Performance Data

4-Connector Channel Testing to ANSI/TIA/EIA568-B.1 and ISO/IEC 11801

