

SIGNAMAX
CONNECTIVITY SYSTEMS



Category 6+ Connectivity System

CAT **6+**
PERFORMANCE

For The highest level of cabling system performance, specify the new Signamax Category 6+ Connectivity System. This ultra-high performance system has been designed to exceed TIA/EIA Category 6 and ISO/IEC Class E specifications. With usable bandwidth beyond 250 MHz, The Signamax Category 6+ Connectivity System provides a powerful, cost-effective platform to support the most bandwidth-intensive applications.

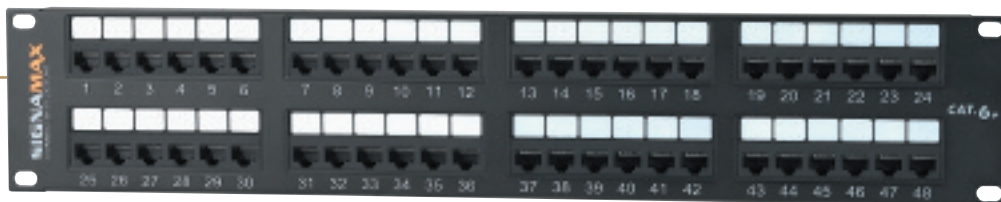
System elements include patch panels, 110 cross connect products, patch cords, and work area outlet solutions, all designed to the highest component level performance specifications. The Signamax Category 6+ System is third party tested to 750 MHz using the worst case 4-connector channel configuration to insure optimum performance.

The Signamax Category 6+ System is backed by our 25-Year Connectivity/Cabling System Limited Warranty when installed by a Certified Signamax Installation/Design Partner, which provides assurance that you need in the world of constant changing network technologies.

Category 6+ Con

Category 6+ Patch Panels

Signamax Category 6+ patch panels are designed for ultra-high performance, high-density and ease of installation. Panels are available in a variety of port sizes for both rack and wall mount application. Patch panels exceed Category 6 component level performance as specified in TIA/EIA-568-B.2-1.



Category 6+ Patch Panels

PART NO.	DESCRIPTION
12458M-C6C	12-Port Category 6+ Mini Panel w/89D Bracket, T568A/B
12458MD-C6C	12-Port Category 6+ Patch Panel, T568A/B Wiring , 1.75" High
24458MD-C6C	24-Port Category 6+ Patch Panel, T568A/B Wiring , 1.75" High
48458MD-C6C	48-Port Category 6+ Patch Panel, T568A/B Wiring , 3.50" High
96458MD-C6C	96-Port Category 6+ Patch Panel, T568A/B Wiring , 7.00" High
SMB-350	Panel Mount Cable Management Bar, 3.5" Deep

Category 6+ Work Area Outlets

Signamax Category 6+ Work Area products offer both performance and flexibility. The new single and dual port front-loading Category 6+ Connector Modules and Category 6+ Keystone Jacks both exceed TIA/EIA-568-B.2-1 component level performance specification.



Category 6+ Keystone Jacks, 180° Cable Exit

PART NO.	DESCRIPTION
KJ458-C6C	Category 6+ Keystone Jack, T568A/B Wiring

Standard color is Light Ivory. For other colors add the following to P/N;
BK=Black BU=Blue GN=Green OR=Orange
RD=Red WH=White YE=Yellow

Category 6+ Connector Modules

PART NO.	DESCRIPTION
SCM145-C6C	1-Port Category 6+ Module, T568A/B Wiring
SCM245-C6C	2-Port Category 6+ Module, T568A/B Wiring

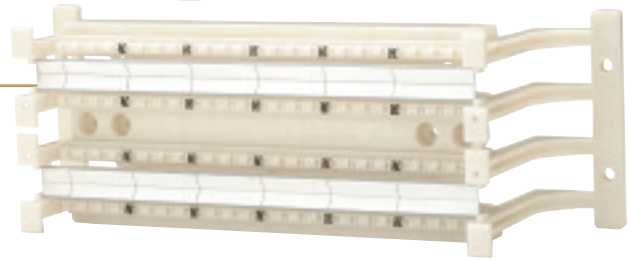
Standard color is Light Ivory. For White add -WH to P/N.



Connectivity System

Category 6+ 110 Cross-Connect System

The Signamax Category 6+ Cross Connect System, to support ultra-high-performance networks, exceeds Category 6 TIA/EIA-568-B.2-1 component level performance requirements. Blocks are designed with the same footprint as standard 50, 100 and 300 pair blocks. Component level patch cords are available in 110/110 and 110/RJ-45 styles.



Category 6+ 110 Wiring Block Kits

PART NO.	DESCRIPTION
WBK6-48PRL4	48-Pair Kit w/Mounting Legs, (12) 4-Pair Connecting Clips & 1 Designation Label/Clear Holders
WBK6-48PR4	48-Pair Kit w/o Mounting Legs, (12) 4-Pair Connecting Clips & 1 Designation Label/Clear Holders
WBK6-96PRL4	96-Pair Kit w/Mounting Legs, (24) 4-Pair Connecting Clips & 2 Designation Labels/Clear Holders
WBK6-96PR4	96-Pair Kit w/o Mounting Legs, (24) 4-Pair Connecting Clips & 2 Designation Labels/Clear Holders
WBK6-288PRL4	288-Pair Kit w/Mounting Legs, (72) 4-Pair Connecting Clips & 3 Designation Labels/Clear Holders
WBK6-288PR4	288-Pair Kit w/o Mounting Legs, (72) 4-Pair Connecting Clips & 3 Designation Labels/Clear Holders

Note: Wiring Blocks and Connecting Clips are also sold separately.

Category 6+ Patch Cords

Signamax continues to set the standard for high-performance, high-quality patch cords. These Category 6+ cables are manufactured to the strictest performance requirements, as specified in TIA/EIA-568-B.2-1, using a special, higher-performance plug design and cable construction. All Category 6+ cords are 100% transmission tested to insure superior performance.

Category 6+ Patch Cords with Snag-Proof Boots

PART NO.	DESCRIPTION
C6C-114CC-LGFB	Category 6+ Patch Cord w/Snag-Proof Boots

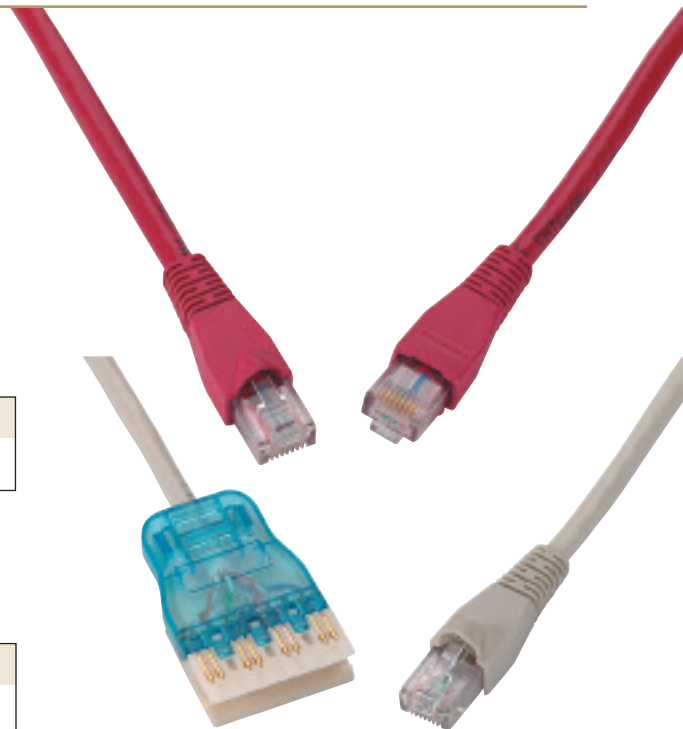
For cable color substitute CC for color in P/N;
 BK=Black BU=Blue GN=Green GY=Gray OR=Orange RD=Red
 WH=White YE=Yellow

Category 6+ 110 Patch Cords

PART NO.	DESCRIPTION
Category 6+ 110 Patch Cords	
C6C-4P-GY-LGB	Category 6+ 4-Pair 110 Patch Cords
Category 6+ RJ-45/110 Patch Cords	
C6C-4P-458B-GY-LGB	Category 6+ RJ-45/4-Pair 110 Patch Cords

For cable length substitute LG for length in P/N.

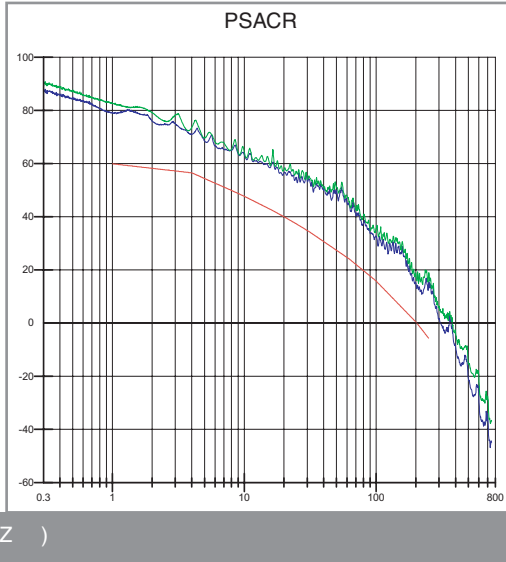
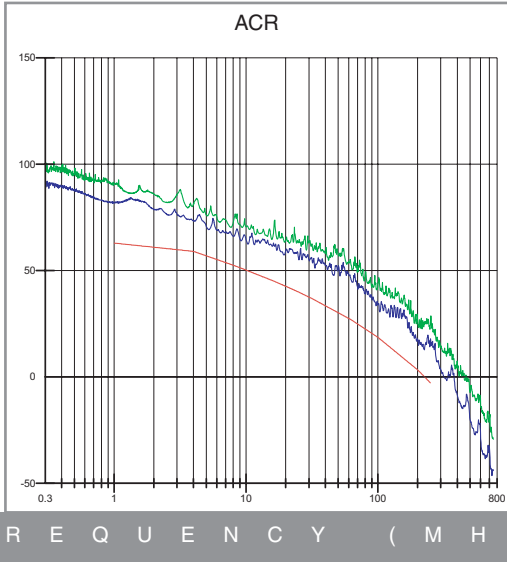
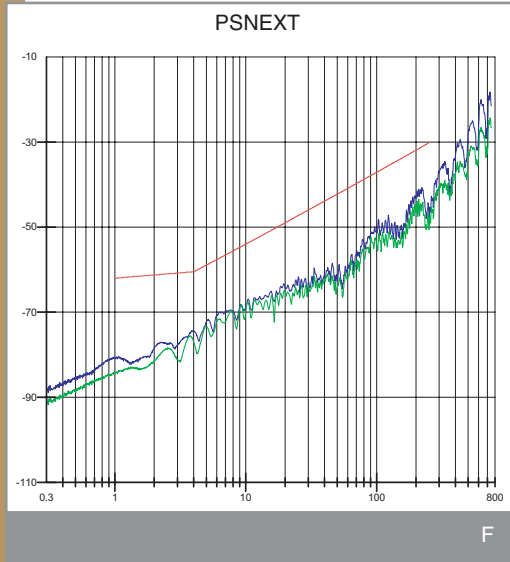
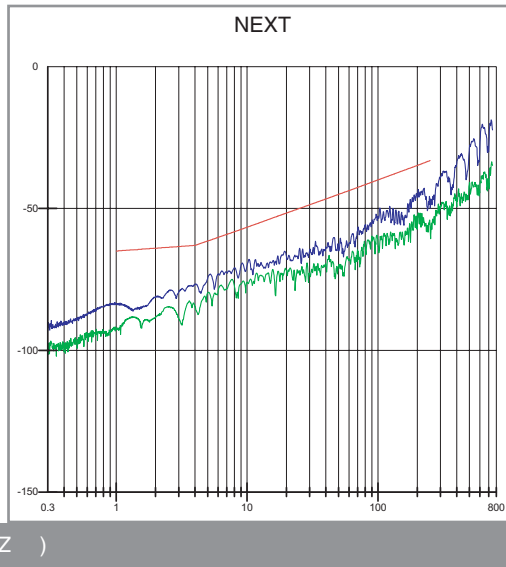
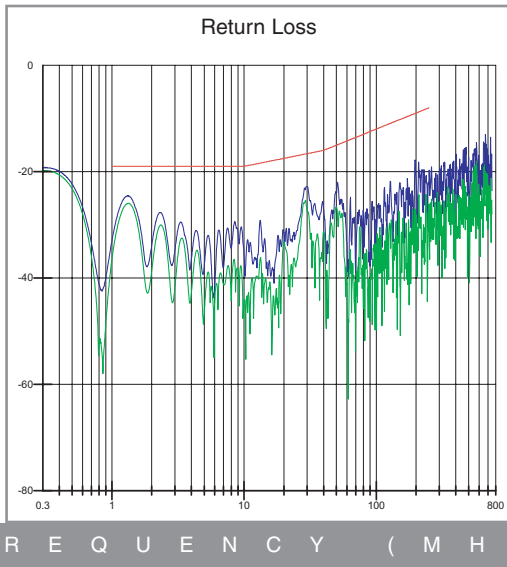
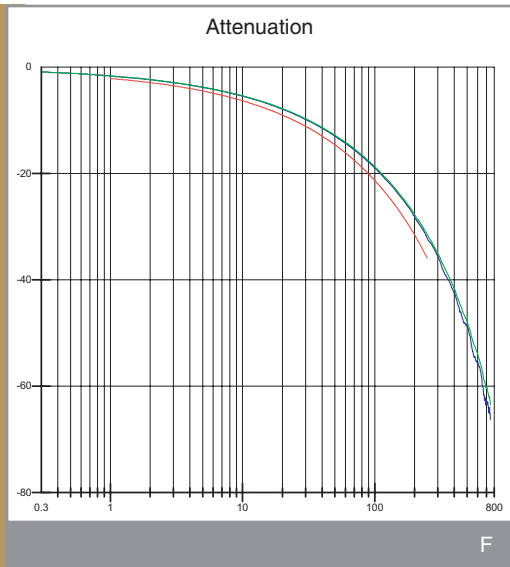
3=3 Ft. 5=5 Ft. 7=7 Ft. 10=10 Ft. 14=14 Ft. 20=20 Ft. 25=25 Ft.



Category 6+ Connectivity/Cabling System Performance Data

4-Connector Channel Testing to ANSI/TIA/EIA568-B.2-1 and ISO/IEC 11801

DB (BLUE - WORSTCASE, GREEN - AVERAGE)



DB (BLUE - WORSTCASE, GREEN - AVERAGE)

